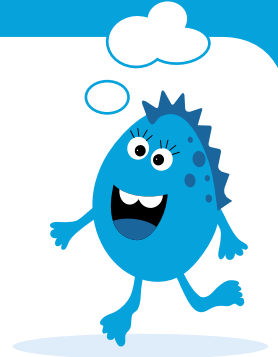


Dinosaurs used to walk the land where the Channel Tunnel is now.
The earth dug out when the tunnel was built is from the Cretaceous period.

What would your dinosaur look like and what might its habitat have been like?



BRITISH
SCIENCE
ASSOCIATION

Taking place in March each year, British Science Week is a nationwide celebration of science, technology, engineering and maths, featuring thousands of events and activities up and down the country.

If you're interested in taking part, attending an event or getting stuck in with citizen science, visit our website to find out more: www.britishtscienceweek.org



britishscienceweek.org

